

# NEWSNOTE

ISSUE 16 JANUARY 24, 2024

## FROM THE PRINCIPAL'S DESK...

Our volunteer group, school parents and grandparents, faculty, staff, and students are proud of St. Mary's Elementary School. Our team has dedicated a great deal of their time, talents, and treasures to grow SME into a community that enables students to reach their various goals in a safe and nurturing environment. We model and help our students be socially responsible; we provide opportunities for all members of our school to grow spiritually; we have taken intentional steps to allow our students to pursue academic excellence. We are also aware, however, that our work is never complete, and we will never rest in complacency.

In order to maintain our level of success and continue to grow as a school community, we recently distributed surveys to hear from various groups of stakeholders. Our school board sought to collect data that will allow us to draw fair and accurate conclusions, which will then help us make informed decisions moving forward. I want to thank all respondents for sharing their honest thoughts and insights, for allowing us to share your perspective and experiences through thoughtful consideration of your responses. Your partnership continues to help us be the strong, vibrant school and community we are.

In the near future, we will be sharing another round of questions for your consideration. St. Mary's Elementary School has begun our Middle States accreditation process, and the next survey we will be sharing considers our school's culture, from many perspectives. Responses will again provide data that will help our review team and me draw conclusions. Again, if you choose to respond to the survey, your input will be a most useful tool as we craft school-wide and organizational goals for St. Mary's Elementary School.

For all you have done for SME, and for all you will continue to do for St. Mary's Elementary School, thank you.

Mr. Olejniczak

### Inclement Weather Closings:

In the event that we need to close/cancel you will be notified via:

- Automated call/text/email from Mr. O

- Facebook & Instagram posts
- News Channels 2 & 4

We also follow Lancaster Central Schools when the entire district is closed, not building specific.

## BY THE NUMBERS

We offer a wide variety of opportunities to support SME and will be changing things up this year with our offerings.

We understand that every fundraiser will not be for everyone, but we do appreciate any & all support you can give!

Year round ways to help:

- Boxtops 4 Education

*Just scan in the app to earn!*

*We earned \$20.30 in December*

*5th Grade is in the lead with the most boxtops scanned @ 186!!*

- RaiseRight Program

- Tops in Education Program

*Just link your bonus card*

## TAX TIME

Have you begun filing your taxes? Is your preparer looking for our Tax ID Number? The directive given to us by the diocese is to *not* release that number. In its place you can/should indicate **Religious Exemption**. Specific questions can be directed to Mrs. Jezuit: ([jezuitn@smeschool.com](mailto:jezuitn@smeschool.com))



2/1 - ASC ends @ 5:00 so we can prepare for our Open House

## HOME SCHOOL ASSOCIATION

HSA can't wait to see you tonight at 6 p.m. in the gym. We will be sharing about the spring candy sale, future fundraisers, and events.

Who's ready for spring? Start thinking spring with our Spring Candy Sale with Fowlers. It begins today and runs until Feb. 16th. Attached you will find all the information you need to sign up. Share your sellers link with all your chocolate loving friends and family. What a sweet way to support SME! If candy is not for you, donations can also be given to SME through the fundraising link with Fowlers. If you have any questions please email [hsa@smeschool.com](mailto:hsa@smeschool.com) Thank you for your support of our HSA & SME! Remember all of our fundraising profits go to our students and teachers.

As we enter the second half of the school year, the HSA would like to share the [volunteer sign up form](#) again for the remainder of the events/fundraisers. We can't wait for the fun and exciting events to come and to see you there too!

### January Events:

- 24th - HSA Meeting Tonight at 6 p.m. in the gym
- 1/24-2/16 - Fowler's Spring Candy Sale



### UPCOMING EVENTS:

- Wed. 1/24 - HSA Meeting 6:00pm
- Wed. 1/24 - Fri. 2/16 - Fowlers Spring Sale
- Fri. 1/26 - Distinguished Graduate Mass, 8:30
- Sun. 1/28 - Sat 2/3 - Catholic Schools Week!
- Wed. 1/31 - PR2 Upload Gr. K-8
- Thurs. 2/1 - Pre-K - 8 Open House 6-8pm
- Fri. 2/2 - Christian Witness Mass, 8:30
- Wed. 2/14 - Ash Wednesday Mass, 8:30; Parish Sponsored Clam Chowder Dinner 4-6:30pm
- Fri. 2/16 - 8th Grade Sponsored Fish Fry, 4-7:00pm, Fowlers Spring Sale Ends
- Mon 2/19 - Fri. 2-23 - NO SCHOOL - Mid-Winter Recess
- Tues. 2/27 - Spring Picture Day
- Wed. 2/28 - Grad/Club/Sport Picture Day

### INSIDE THIS ISSUE:

PRINCIPAL'S DESK	1
BY THE NUMBERS	1
Afterschool Care	1
Tax Time	1
HSA	1
Bison Fund	2
Mega Raffle	2
Re-Registration	2
Catholic Schools Week	2
RaiseRight	2
Special Person's Lunch	2
8th Grade Info	2
Stay in the Know	2



## ST. MARY'S ELEMENTARY SCHOOL

2 St. Mary's Hill  
Lancaster, NY 14086

Phone: 716-683-2112  
Fax: 716-683-2134  
www.smeschool.com



UPON THIS HILL,  
WE DO GOD'S WILL



Social Responsibility



Spiritual Growth



Academic Excellence

## BISON SCHOLARSHIP INFO

The BISON Fund pre-application for new or current families not on BISON for the 2024-25 school year opened on January 15th.

To start the process, families can complete a pre-application form online at <http://bisonfund.com/our-scholarships>.

The deadline is March 15th. Scholarships are awarded using a lottery system from all submitted pre-applications forms and all applicants will be notified of lottery results via email on March 16th.

Current families **do not** need to fill out a pre-application, they will be emailed a link to complete the renewal process and add siblings on February 20th.

If you have any questions, please feel free to contact the Bison Fund office at 716-854-0869 ext. 1.



## MEGA RAFFLE

Mega Raffle is coming June 7, 2024.

The top prize is \$35,000 with 13 other prizes to win.

**New this year are VIP tickets and sponsorship opportunities.**

Please see the [letter](#) coming home today with all the details!  
Get your tickets early, you gotta be in it to win it!

If your family has any connections or if you know of any businesses or individuals who might be interested in contributing, we would be incredibly grateful for any raffle donations. These contributions can come in various forms such as gift cards, merchandise, services, or any other items suitable for our raffle.

We also have an [Amazon Gift List](#) set up if you would like to donate an item for the basket raffle. Remember you can always purchase items with a RaiseRight Gift Card! We will be gathering raffle items until June.

We are always looking for volunteers. If you are interested please email [meGARaffle@smeschool.com](mailto:meGARaffle@smeschool.com).

## RE-REGISTRATION

Registration for the 24-25 school year is just around the corner! All current SME families will receive their registration packet(s) before they are available to the general public at our open houses.

Only the prompt return of your completed packet will guarantee your spot for the 24-25 school year.

Our open house for the public is scheduled for 2/1 for all grades.

*We look forward to another year with all of you!*

## CATHOLIC SCHOOLS WEEK

Monday - Wear White

Tuesday - Wear Blue

Wednesday - Wear your pillar color

Thursday - Dress for a job interview or future career. Our pre-k students will dress like they are 100!

Friday - Wear Red

We will have activities throughout the week for the students as well.

Our week will begin with a special kick off during our 10:00 mass in the church on Sunday 1/28.



Catholic Schools  
United in Faith and Community

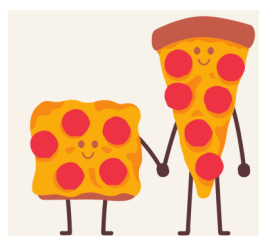
## SPECIAL PERSON'S LUNCHEON!

On Friday, February 2nd our 8th graders will be hosting a Special Person's Luncheon!

Every student is welcome to invite a special person (for \$5) to join them for a pizza lunch during their lunch period.

Our 8th grade students will be hosting and serving our students and guests. Lunch will include pizza, salad and a drink.

Our lunch periods run:  
Pre-K - Gr 2: 11:24 - 11:57  
Gr. 3- Gr 5: 11:59 - 12:32  
Gr 6 - Gr 8: 12:34 - 1:07



*An invitation is attached electronically today!*

## RAISERIGHT

Reminder: Families earn 100% of rebates up to \$250 and an 80/20 split thereafter.

### **About the process:**

RaiseRight credits are processed quarterly: March, June, September, and December. Mrs. Jezuit applies credits to tuition accounts based on the reports generated and received from RaiseRight. The RaiseRight office is not able to look into individual tuition accounts. If you (or a family member) is purchasing cards to help reduce your tuition you/they **must** designate the recipient family when opening an online account **or** by indicating the family name on paper order forms. Without this information the RaiseRight office has no way of knowing where to assign credits.

If you have any questions, please email [raiserright@smeschool.com](mailto:raiserright@smeschool.com). Our team is here for you!

Creating an online account: [RaiseRight.com](http://RaiseRight.com)

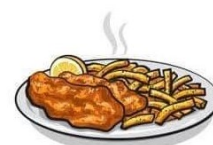
For a complete list of participating retailers visit the shop with scrip website: <https://www.raiserright.com/brands>

Here is a quick link to the order form: [RR Order Form](#)



## 8TH GRADE INFO

The 8th grade class is sponsoring a Fish Fry on Fri. 2/16 from 4:00-7:00!



\$16 Ticket Includes: 11oz beer battered haddock (from Krolick's), tartar sauce, cole slaw, macaroni salad & a roll with butter

*Only 300 dinners will be sold!*

Take out and dine-in options available.

Pre-order [here](#) to secure your dinner!

Thank you for your support of our 8th grade class!

## STAY IN THE KNOW

**Save the Date:** 3/1 CW Mass, 8:30

**Make Note:** 3/15 10:45 Early Dismissal: Staff PD Day

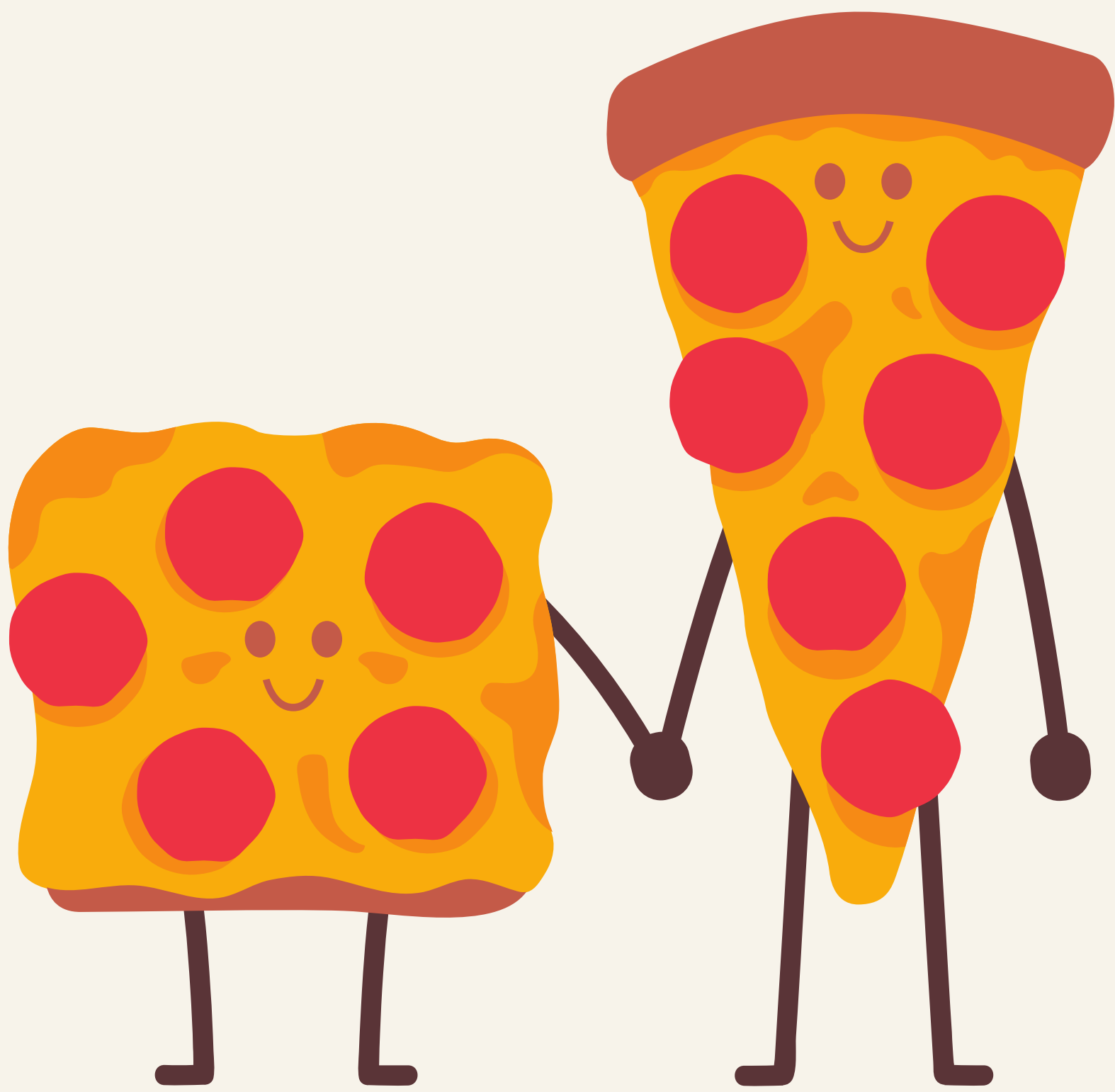
**Make Note:** 3/20 MP2 Report Card Upload

**Save the Date:** 3/22 Mother/Son Dance 6-8pm

**Save the Date:** 3/28 Living Stations

**Make Note:** 3/29 No School - Good Friday

**Make Note:** 4/1-4/8 No School



**PICK 1 SPECIAL  
PERSON TO  
COME & HAVE  
LUNCH WITH YOU**

# **SPECIAL PERSON'S LUNCHEON**

**(FUNDRAISER FOR 8TH GRADE)**

**DATE: FRIDAY, FEBRUARY 2ND**

**TIME: DURING YOUR SPECIAL KIDS LUNCH PERIOD**

**1 SLICE OF PIZZA**

**BOWL OF SALAD**

**1 DRINK**

**\$5**

-----  
**SPECIAL PERSON'S NAME:** \_\_\_\_\_

**STUDENT'S NAME:** \_\_\_\_\_

**AMOUNT ENCLOSED:** \_\_\_\_\_ (JUST FOR SPECIAL PERSON)

**RETURN IN ENVELOPE - ATTN: SPECIAL PERSON'S LUNCH**

**DUE BY: MONDAY, JANUARY 29TH**



# BISON

CHILDREN'S SCHOLARSHIP FUND

Giving Parents a Choice · Giving Children a Chance

The **BISON Children's Scholarship Fund** is a private scholarship fund providing tuition assistance for low-income families throughout the 8 counties of Western New York who want to enroll their children in private K-12 schools.

## STEP 1

Complete a pre-application online at [bisonfund.com](http://bisonfund.com) between **January 15, 2024** and **March 15, 2024**. Call BISON with questions at (716) 854-0869 ext. 1.

## STEP 2

Watch for notification after the BISON Lottery is held on **March 16, 2024**. Lottery winners will receive an email with a link directing them to complete a full application to receive the scholarship. If you're not chosen, you will automatically be placed on the BISON waitlist.

## STEP 3

If selected, complete the full application online. Enroll your child(ren) in the school of their choice and ask the school to complete the school commitment form.

## STEP 4

Once all the steps are completed, BISON will notify you of your scholarship amount. Watch for email notices to annually renew your BISON Scholarship in February of each year and add siblings.

### BISON K-8 Scholarship Quick Facts:

- Average K-8 scholarship of \$1,620 and maximum award of \$2,500.
- Currently BISON has over 1,900 scholars in 77 different private schools across Western New York.
- Each family must contribute toward their child's private education.

### INCOME ELIGIBILITY AMOUNTS

Household Size	Total Income (Based on 2023 household income)
2	\$ 53,244
3	\$ 67,122
4	\$ 81,000
5	\$ 94,878
6	\$ 108,756
7	\$ 122,634
8	\$ 136,512





## FAQ for FAMILIES

More detailed information can be found on our website at [www.bisonfund.com](http://www.bisonfund.com)

### WHO QUALIFIES FOR A BISON K-8 SCHOLARSHIP?

Residents of the 8 counties of Western New York (WNY) with children entering K-8<sup>th</sup> grade with a total family income within the income eligibility scale on the reverse side. You may only apply for your biological or legal guardian children.

### HOW DO NEW FAMILIES APPLY?

New families must complete a pre-application form electronically (online) on our website at [bisonfund.com](http://bisonfund.com). The new family deadline is **March 15, 2024**. Preference is NOT given to early applications; however you must apply by 3/15 to be considered for the lottery. Families applying after the **March 15, 2024** deadline will be placed on our waitlist.



### HOW ARE BISON SCHOLARSHIP RECIPIENTS CHOSEN?

Scholarships are awarded using a lottery system from all submitted pre-application forms on **March 16, 2024**. Lottery winners will receive an email with a link directing them to complete a full application in order to receive the scholarship.

### HOW DO I KNOW IF I WON THE LOTTERY?

All applicants will be notified of lottery results by email on **March 16, 2024**. If you're not chosen in the lottery you can always reapply for the next school year.



### I RECEIVED A SCHOLARSHIP AWARD EMAIL ... NOW WHAT?

In your award email, there will be a link to complete your full application. Click on the link and follow the application steps. **The deadline to complete the application is April 30, 2024.** Please be sure to include all your income sources including your FEDERAL 1040 tax return, child support, business income, public assistance, food stamps, Social Security income, unemployment insurance, worker's compensation and financial assistance from family & friends. Select your school (a complete list can be found on our website) and contact the school to complete the school commitment form. After receipt of all the required documents, your scholarship will be calculated based on your household size and income, as well as tuition amount. You must renew annually to continue with BISON.



### I RECEIVED NOTICE I'M ON A WAITLIST ... NOW WHAT?

Unfortunately, there are always more applicants than available funding. We keep waitlist names for the academic year hopeful that additional funding becomes available. If you are not taken off the waitlist, you will need to resubmit a pre-application next year to be considered.

### WHY DO FAMILIES HAVE TO PAY PART OF THE TUITION?

One key component of educational success is parental involvement. Making a financial sacrifice is a strong incentive to becoming and remaining, involved. BISON families are required to pay a minimum of \$500 each year.

# a dozen reasons

## to choose Catholic Schools





## SPRING CANDY FUNDRAISING

**School Name:** St. Mary's Elementary

**School ID:** \_\_\_\_FC21\_\_\_\_

**Start Date:** 1/23/24 **End Date:** 2/16/24

(\*Fundraiser closes at midnight on last day/no late orders accepted)

**Dear Parents and Students:** We are pleased to offer Fowler's Chocolates as our spring fundraiser.

Fowler's has added some new delicious chocolate goodies, candy treats and adorable stuffed animals all perfect for filling up an Easter basket.

All orders are placed online through a computer by going to [shop.fowlersfundraising.com](http://shop.fowlersfundraising.com) or on the mobile phone app **MyFundR Fundraising** using your child's unique SELLER ID LINK.

You can have out of town family and friends make their purchases and have their orders shipped directly to their home. Shipping charges apply. Ship to school is also an option at no additional charge.

There is no money to collect as all orders are processed with a credit card.

**Parents or students must register for an online account to obtain your unique SELLER ID LINK.**

How to register your child on a computer:

1. Open your browser to [shop.fowlersfundraising.com](http://shop.fowlersfundraising.com)
2. Sign up for your account using the SCHOOL ID shown at the top of this letter
3. You will be sent an email with your child's unique SELLER ID # and a LINK.
4. Share your child's SELLER ID LINK through emails, texts, and social media with family and friends. This is how they will get to the website to place orders.

How to register your child on a smart phone:

1. Go to the APP Store and download the **MyFundR Fundraising** mobile app on to your phone, or simply scan the QR code to the right.
2. Sign up for your account using the SCHOOL ID shown at the top of this letter
3. You can now place orders or share the catalog right from your smart phone with your unique SELLER ID LINK
4. Your family and friends can order chocolate from the link you provide.



SCAN ME



FOWLER'S  
FINE CHOCOLATE SINCE 1910

# Spring Fundraising 2024

QUITE POSSIBLY, THE BEST CHOCOLATE YOU'VE EVER TASTED.





# Sweet Bunnies...of Spring!



**Graham Bunny**  
Milk | 16 oz. Hollow | \$27.00



**Peanut Butter Rabbits**  
Milk | 6 oz. | \$11.00



**Derek Bunny**  
Milk | 8 oz. Hollow | \$14.00



**Lil Evie Bunny**  
Milk | 8 oz. Hollow | \$14.00



**Katie Kitty**  
Milk | Dark | White  
4 oz. Solid | \$9.00



**Boy Bunny**  
Milk | 4 oz. Solid | \$7.00



**Girl Bunny**  
Milk | 4 oz. Solid | \$7.00



**Vail Bunny**  
Milk | 4 oz. Solid | \$7.00



**Easter Minikins**  
Milk | Dark | Orange | White  
8 oz. | \$14.75



**Flo Bunny**  
Milk | 10 oz. Solid | \$17.50



**Cross**  
Milk | Dark | White  
3 oz. Solid | \$6.00

# Basket Delights



**Kitty Pops 6-pk**  
Milk | 6 oz. | \$12.00



**Happy Easter Bar-6pk**  
Milk | 13.5 oz. | \$16.00



**Bunny Pops 6-pk**  
Milk | 6 oz. | \$12.00



**Dalmation 2-pack**  
Milk | 2 oz. | \$4.00



**Unicorn 2-pack**  
Milk | 2 oz. | \$4.00



**Butterfly 2-pack**  
Milk | 2 oz. | \$4.00



**Chocolate Foiled Eggs**  
Milk | 12 oz. | \$14.50



**Daisy Sucker 2-Pack**  
Milk | 3 oz. | \$6.00



**Emoji Foiled Balls**  
Milk | 8 oz. | \$13.50



**Rabbit Sucker**  
Milk | 2.5 oz. | \$4.75



**Dancer**  
Milk | Dark | White  
3 oz. Solid | \$6.00



**Stegosaurus**  
Milk | 3 oz. Solid | \$6.00

# Share...and Enjoy!



## Premium Bars - 6 bars

(1 each)

Milk | Dark | Almond | Crisped Rice  
Caramel Peanut Butter

13.5 oz. | \$16.00



Sasha Owl  
\$12.00



Nutmeg Guinea Pig  
\$12.00



Pebbles Bunny  
\$12.00



Silver Kitty  
\$12.00



Bunny/Chick Gummies  
Fruit/Sugar-Coated  
8 oz. | \$6.50



Butterfly Gummies  
Fruit | 8 oz. | \$6.50



Candy Building Blocks  
Asstd. | 4 oz. | \$5.00

Pg.4

**FOWLER'S**  
FINE CHOCOLATE SINCE 1910

716.877.9983  
www.FowlersChocolates.com



Jelly Beans  
Asstd. Fruit | 12 oz. | \$6.00



Malted Eggs  
Assorted | 8 oz. | \$9.00



Satellite Wafers  
Asstd. | 1.5 oz. | \$6.00

# Favorites of Buffalo

Only from Fowler's...  
your hometown candy  
maker since 1910.



## Sponge Candy

Milk | Dark | Orange | 1 lb. | \$30.00  
Milk | Dark | Orange | 8 oz. | \$16.00



## Sponge Candy Mixed

Milk and Dark  
12 oz. | \$26.50



## Sponge Candy Bar

Milk | 11.25 oz.  
5 pack | \$15.00



## Mini Buffalos

Milk | Dark | Orange | White  
Dark Mint | 8 oz. | \$14.75



## BuffaloOreos

Milk w/Dark | 8 oz. | \$18.50



## Truffaloes®

Milk/Hazelnut & Dark/Raspberry  
6 oz. | \$19.00



## Pizza & Wings

Milk/White | 9 oz. | \$18.50

Pg.5

**FOWLER'S**  
FINE CHOCOLATE SINCE 1910

716.877.9983  
www.FowlersChocolates.com

# Anytime Favorites

**Sea Salt Caramels**  
Milk | Dark | 8 oz. | \$18.50



**Peanut Butter Truffles**  
Milk | 8 oz. | \$18.50



**Pecan Caramel Clusters**  
Milk | Dark | 7 oz. | \$18.50



**Peanut Clusters**  
Milk | Dark | 8 oz. | \$17.00



**Coconut Clusters**  
Milk | Dark | 8 oz. | \$17.00



**Raisin Clusters**  
Milk | Dark | 8 oz. | \$17.00



**Almond Butter Crunch**  
Milk | Dark | 8 oz. | \$18.50



**Decadent Delight**  
Caramel Corn, Nuts, Milk,  
Dark, White | 14 oz. | \$17.00



**Chocolate Covered Popcorn**  
Milk | 7 oz. | \$13.00

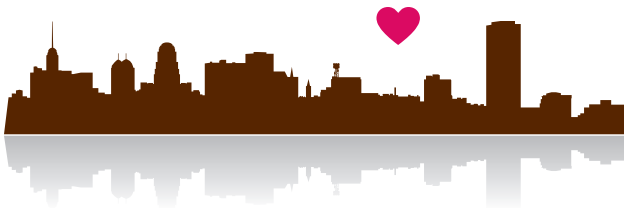
# Fowler's means fundraising success! Buffalo's locally owned premium chocolatier

Thank you for supporting the organization that shared this catalog with you. Your purchase makes all the difference in helping them achieve their goals and aspirations for the year, and helps out a vital part of the Buffalo community.

Fowler's Chocolates is a name that means superior chocolate. We are a Buffalo based, family run business that has been a part of this community since 1910. We've helped organizations meet and exceed their fundraising goals with our delicious products for over thirty years. We offer multiple fundraising options for schools, leagues, clubs and non-profits.

We now offer an online fundraising program with direct to home shipping or ship to school. This means no more forms to collect and no more door to door sales, it is a streamlined ordering process and is less work for schools and organizations. These changes to our program are focused on helping your organization raise money for what's most important and reducing your workload while continuing to provide the best quality chocolates your community has come to expect year after year.

## Thank You!



*Ted Marks* - President

### Fowler's Chocolates

100 River Rock Drive | Buffalo, NY  
716.877.9983

[www.FowlersChocolates.com](http://www.FowlersChocolates.com)

## Find a Fowler's Store Near You

### BUFFALO

Headquarters and Factory Store  
100 River Rock Drive "Sweet" 102  
Buffalo, NY 14207  
716-877-9983

### EAST AURORA\*

671 Main Street  
East Aurora, NY 14052  
716.655.9915

### CHEEKTOWAGA\*

2563 Union Road  
Cheektowaga, NY 14227  
716.668.2113

### TONAWANDA\*

2468 Niagara Falls Blvd.  
Tonawanda, NY 14150  
716-694-4314

### HAMBURG

314 Lake Street  
Hamburg, NY 14075  
716-648-4677

\* Serving Ice Cream Year Round!



Pg.7

**FOWLER'S**  
FINE CHOCOLATE SINCE 1910

716.877.9983

[www.FowlersChocolates.com](http://www.FowlersChocolates.com)

*Photos are for descriptive purposes only; product and packaging may vary slightly, but the content will be every bit as delicious!*



# Quick Guide to Fowler's Spring Fundraising Program

To Register or Login go to [www.shop.fowlersfundraising.com](http://www.shop.fowlersfundraising.com)

**Download Our APP Today!**

Available on the App Store

GET IT ON Google Play

**Shipped Direct to you at Home or School!**

## How do we sell?

### Online Only

- Sellers will share a link to our selling site through our app or computer.
- Sellers can share the link via text, email, or on social media.

## Profit %

ONLINE ORDER	PROFITS
\$5000 or more*	40%
\$2500-\$4999*	35%

\*Includes chocolate and magazine sales. Donations do not count toward minimum order. \*Minimum order of \$2500 is required to qualify for fundraising benefits.

## How do we take orders?

- All orders are placed online at [www.shop.fowlersfundraising.com](http://www.shop.fowlersfundraising.com) OR through our app.
- Yeah!! No more order forms!
- All payments will be on credit/debit cards.
- Brochure PDF is available for downloading.
- Sellers can take orders on the app with a credit card or over the phone.

## Online Orders

- School shares the fundraising site link to parents and students so they can register to sell.
- Sellers create registration and share fundraising link using the app.
- Sellers can customize their page and their message before sharing.
- Sellers can text, email or post their selling site link with just a few clicks.
- Sellers can have out of town family and friends make purchases and have their order shipped direct to their house. Shipping charge apply.
- Ship to school is also an option at checkout.

## Program Benefits

- Contact-Free, no door to door sales.
- Easy to use website.
- Fun app for kids to use and share.
- Watch the real time leader board to track goals.
- Easy tracking for school to create prize programs.
- Set up automatic emails to sellers for reminders.

## Donations

- Online donation gives schools 90% of the donation. *The remainder is used to pay for the platform and credit card fees.*
- Donations count towards student's goal.
- Donations do NOT count towards school's minimum order.

## Magazine Sales

- 84 different magazines to choose from.
- Schools get the same % profit.

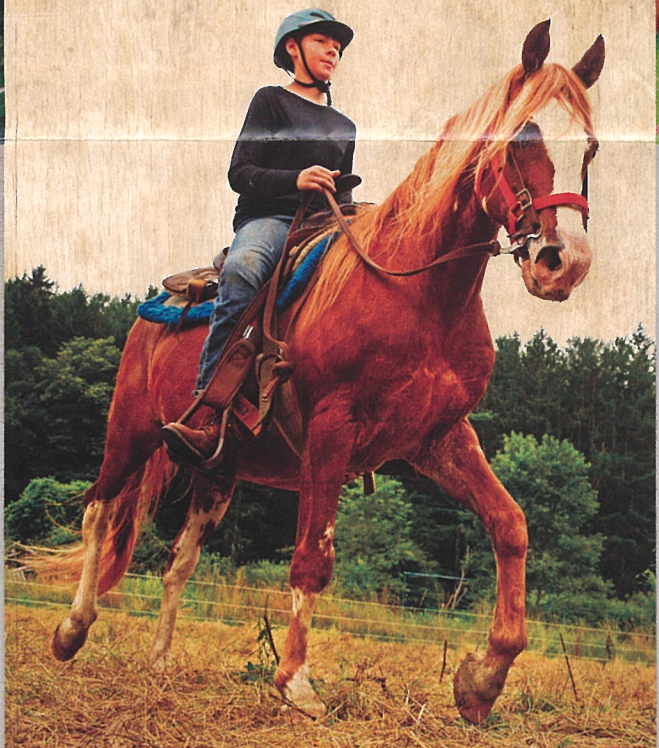
## How do I sign up?

Create an Account or Log in at:

- <https://shop.fowlersfundraising.com/>
- Call Dan Robinson at 716-638-7703 or email [Dan@fowlerschocolates.com](mailto:Dan@fowlerschocolates.com)

# Welcome to Camp Turner!

In cooperation with  
NY State Parks



TO LEARN MORE VISIT  
[www.CampTurnerOLV.com](http://www.CampTurnerOLV.com)

Please see our website for  
Prices, Session Themes,  
Camping Schedule

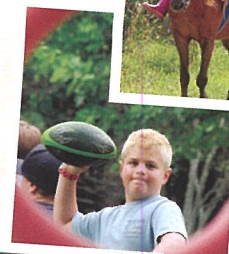
We offer options for:

- Younger campers age 7-13
- Traditional overnight camp for ages 8 - 13
- Pathfinder, Explorer and CIT options for ages 14-17
- Winter Camp between Christmas & New Years
- Family Camps / Cabin Rentals
- Group Rentals

716.354.4555

## Challenge yourself!

- Horseback Riding
- Horse feeding and care
- Archery
- Arts and Crafts
- Hiking
- Creek walks
- Fishing
- Campfires
- Beach Trips
- Challenge Course
- 12+ sports
- Outdoor Living Skills
- Nature Study
- See our website for more details



### Camper Registration

Register online with a credit card  
[www.CampTurnerOLV.com](http://www.CampTurnerOLV.com)

Camp Turner Health Forms, signed by a physician, are due 10 days before arrival.

For financial assistance visit  
[www.friendsofcampturner.org](http://www.friendsofcampturner.org)

### Contact us

Email: [CampTurner@olvcharities.org](mailto:CampTurner@olvcharities.org)

Phone: 716-354-4555





IN ALLEGANY  
STATE PARK

# Camp Turner

- Summer Camp
- Winter Camp
- Family Camp
- Group Rentals



Overnight camp for boys & girls ages 7 - 16

[www.CampTurnerOLV.com](http://www.CampTurnerOLV.com)



# Why choose Camp Turner?

[www.CampTurnerOLV.com](http://www.CampTurnerOLV.com)

- Carefully screened and trained paid staff
- Campers are always supervised
- Registered Nurse always on site
- Horseback riding included, no extra fee
- Modern cabins, flush toilets, hot showers
- We honor cabin mate requests
- Secure Picture Gallery (150+ daily pics)
- Financial assistance available



- the physical, emotional and spiritual safety of every person
- the presence of God in each person and in nature
- positive, respectful relationships
- hospitality, openness and inclusion
- a culture based on gospel values

# We Value

Our mission is to honor God in the children confided to our care.